

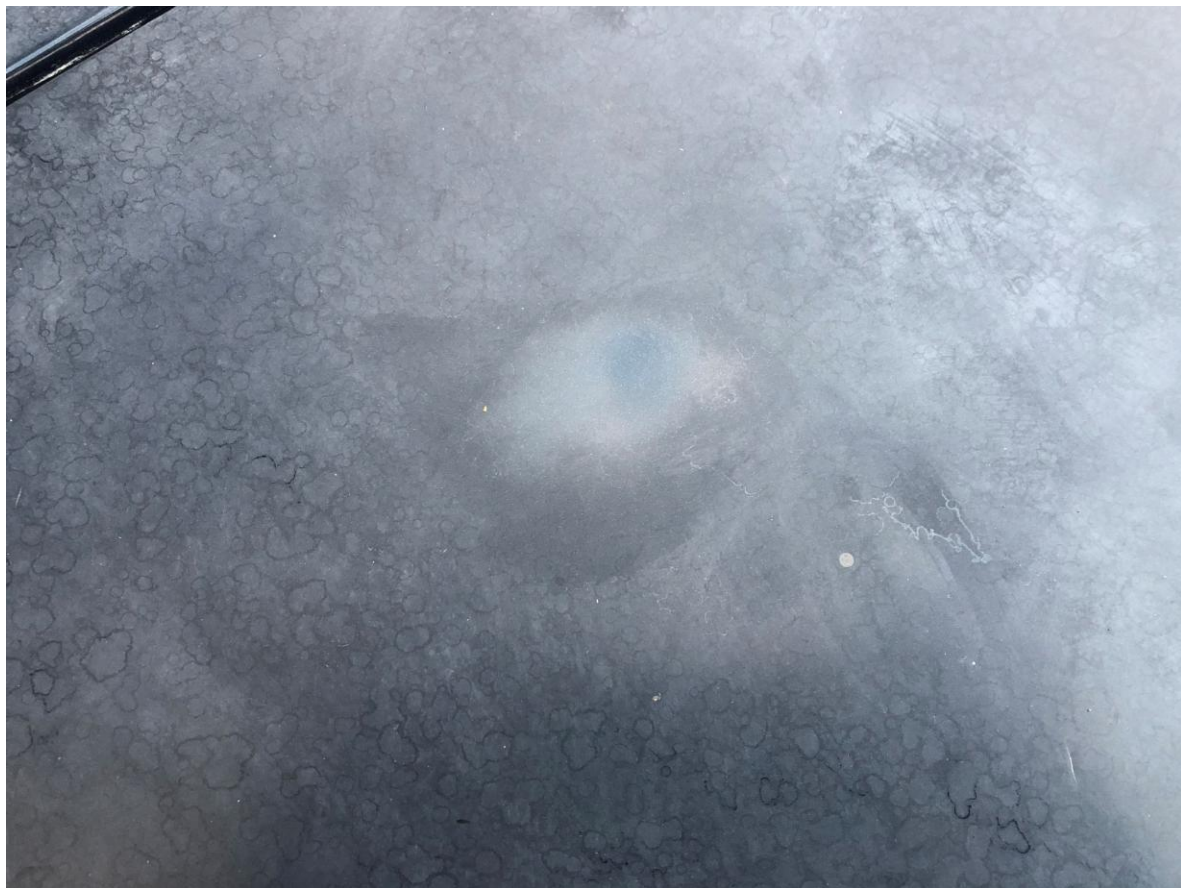
1966 Mustang Convertible Paint Repair

I want to repair the 25 year old nightmist blue paint job on my daily driver electric vehicle conversion. The 144 volts has safety covers and a circuit breaker so it is safe to work on.



I think these areas can be power compound/polish/buffed out:

Hood and top of front fenders



Right rear fender



I think these areas can be touched up then power compound/polish/buffed out:

Left front fender



Side of left rear fender



Top of left
rear fender



Trunk back



These areas require bondo repair:

Top of left rear wheel well



Bottom of right front fender

